



PM ESTATES

Property Sales & Lettings



Navigation House

Bishops Stortford, Hertfordshire, CM23 3AS

£920_{PCM}

Navigation House

Bishops Stortford, Hertfordshire, CM23 3AS

Overview

- First Floor Apartment
- One Double Sized Bedroom
- Family Sized Bathroom
- Open-Plan Living Area
- Fully Fitted Kitchen with Integrated Appliances
- Large Featured Picture Style Window
- Offered Furnished
- Walking Distance to Mainline Rail Station
- Town Centre Location
- Energy Rating B
- Council Tax Band B



Description

Located in the heart of Bishops Stortford Town Centre, we are pleased to introduce this one-bedroom apartment in the popular Navigation House Development

The property is larger than average and includes two storage cupboards in the hallway which leads in to a large and open plan living area. This social area promotes modern living and has a large feature window offering south facing and direct river and town centre views.

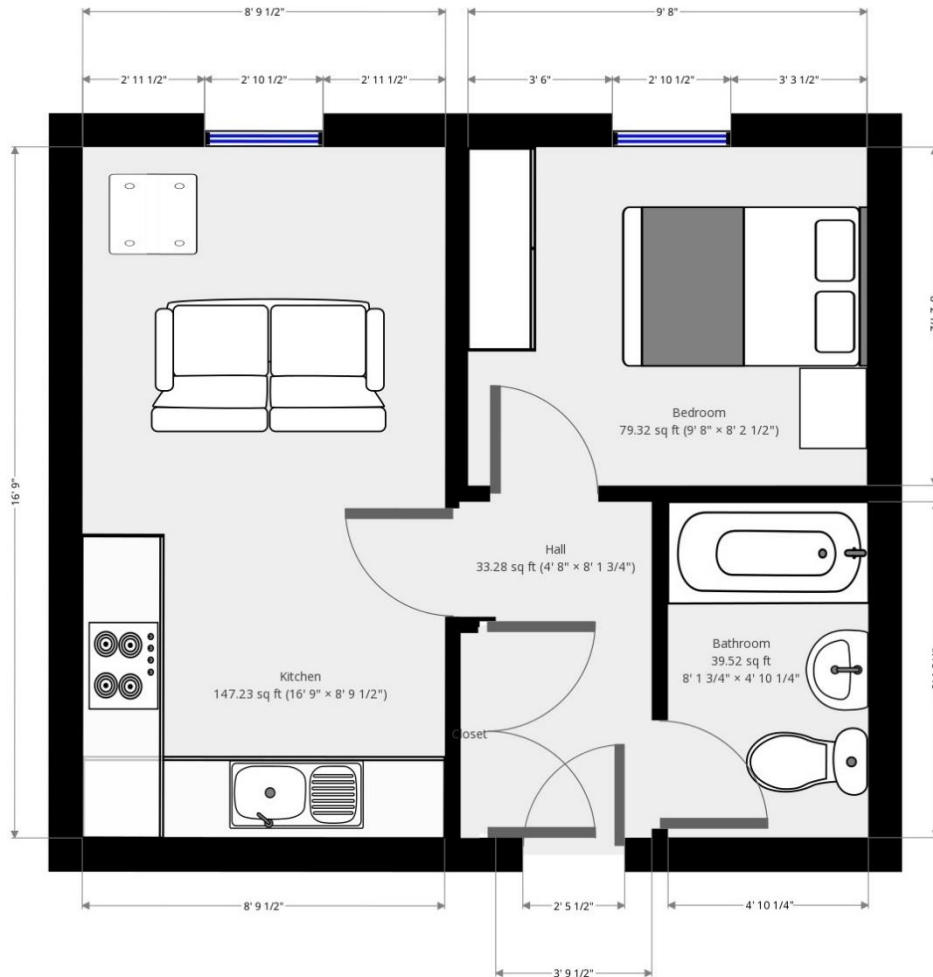
Complete with a fully fitted wooden styled kitchen with integrated appliances, along with a family sized tiled bathroom with wall mounted shower fittings, this apartment is ideal for single professionals and couples alike who wants to take advantage of the town's best features.

Navigation House is a two-minute walk from the mainline rail station which offers direct services to London Liverpool Street, Cambridge and Stansted Airport, lending itself to city commuters and airport workers alike. Also nearby is the M&S Food hall, Starbucks Coffeeshop and the ever-popular Snap Fitness 24/7 Gym Complex to name but a few.



Score	Energy rating	Current	Potential
92+	A		
81-91	B		86 B
69-80	C	78 C	
55-68	D		
39-54	E		
21-38	F		
1-20	G		

Floor Plan



7 Riverside Walk, South Street, Bishop's Stortford, Herts CM23 3AG

Tel: 01279 654646

Email: info@pm-estates.co.uk

www.pm-estates.co.uk

PM Estates wish to advise prospective purchasers that we have not checked the services or appliances. The sales particulars have been prepared as a guide only; any floor-plan or map is for illustrative purposes only. PM Estates, for themselves and for the vendors or lessors of this property whose agents they are give notice that: the particulars have been produced in good faith; do not constitute any part of a contract; no person in the employment of PM Estates has any authority to make or give any representation of warranty in relation to this property.

P820

www.pm-estates.co.uk