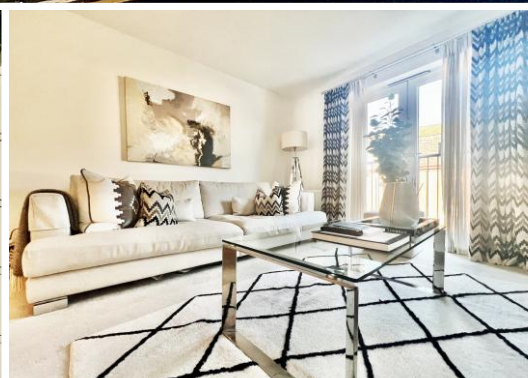




PM ESTATES

Property Sales & Lettings



Chancel House

Bishops Stortford, Hertfordshire, CM23 3BG

£1,375_{PCM}

Chancel House

Bishops Stortford, Hertfordshire, CM23 3BG

Overview

- First Floor Apartment
- Modern Styled Design
- One Double Bedroom
- Fully Fitted Kitchen
- Integrated AEG and Zanussi Appliances
- Open-Plan Living Dining Area
- Family Sized Tiled Bathroom
- Offered Unfurnished
- Town Centre Location
- Energy Rating: B
- Council Tax Band: B



Description

PM Estates are pleased to introduce this immaculately presented one double bedroom apartment within the popular Chancel House Development, within the town centre of Bishops Stortford.

This is one of the rare properties in the development to have entered the rental market whereby this contemporary home has been built to the highest standards with modern living in mind - serving as an ideal choice for professionals.

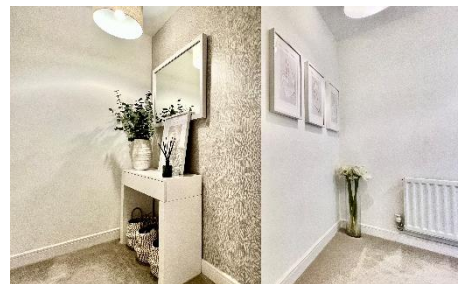
This new but now well-established development is without a doubt one of the most sought-after residential locations within Bishops Stortford due to its quality of finish matched with its close proximity to the town centre as well as the mainline rail station which is located just 0.2 miles from the development offering direct services into Stansted Airport, London Liverpool Street and Cambridge City Centre.

This unfurnished apartment is complete with a sizable open plan living / fully fitted kitchen area complete with Zanussi and AEG appliances inclusive of an integrated oven, hob with extractor fan, and fridge freezer.

The property comprises of one double bedroom, complete with neutral-coloured carpets in keeping with the décor throughout, with the added benefit of a fitted floor to ceiling wardrobe. The family sized bathroom is finished to a high standard, with modern ceramic tiling and complete with a 3-piece suite including bath and shower fittings.

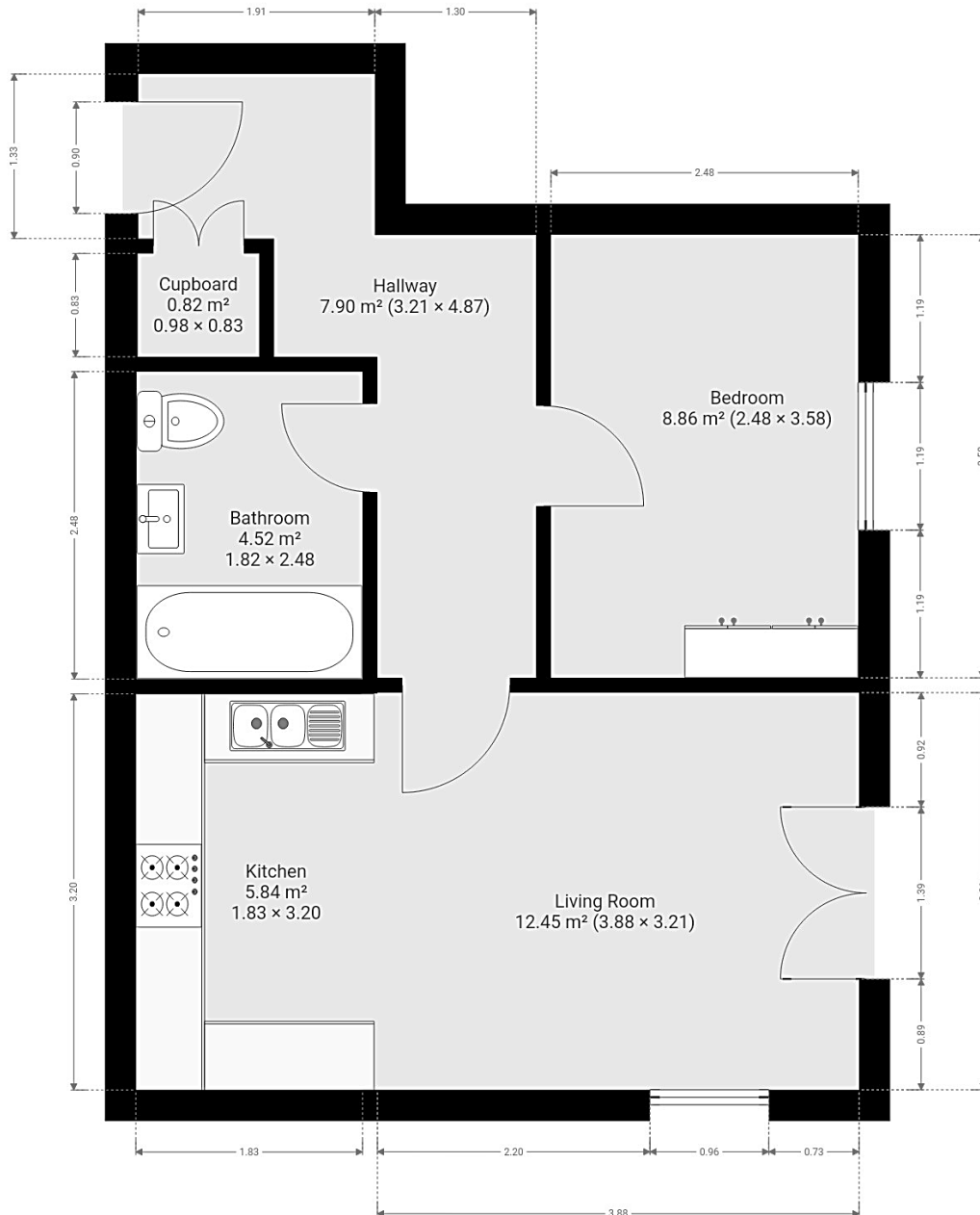
The development is but a minute's walk from the town centre of Bishops Stortford itself which has a plethora of amenities inclusive of a wide variety of pubs and restaurants. There are also various leisure, sports and health facilities such as the Nuffield Health Gym Complex & Spa.

Call us today to book your viewing appointment and avoid disappointment – 01279 654646.



Score	Energy rating	Current	Potential
92+	A		
81-91	B	83 B	83 B
69-80	C		
55-68	D		
39-54	E		
21-38	F		
1-20	G		

Floor Plan



7 Riverside Walk, South Street, Bishop's Stortford, Herts CM23 3AG

Tel: 01279 654646

Email: info@pm-estates.co.uk

www.pm-estates.co.uk

PM Estates wish to advise prospective purchasers that we have not checked the services or appliances. The sales particulars have been prepared as a guide only; any floor-plan or map is for illustrative purposes only. PM Estates, for themselves and for the vendors or lessors of this property whose agents they are give notice that: the particulars have been produced in good faith; do not constitute any part of a contract; no person in the employment of PM Estates has any authority to make or give any representation of warranty in relation to this property.

P820

www.pm-estates.co.uk