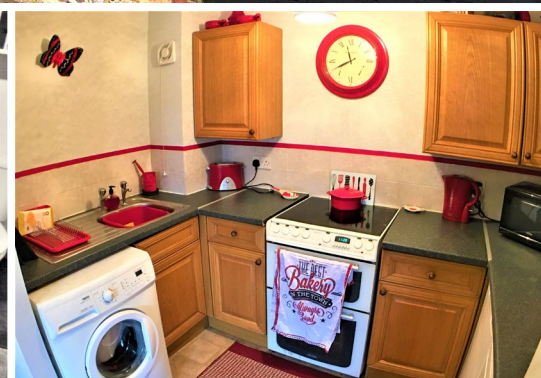




# PM ESTATES

Property Sales & Lettings



## Red Lion Court

Bishops Stortford, Hertfordshire, CM23 3YL

£1,200<sub>PCM</sub>

[www.pm-estates.co.uk](http://www.pm-estates.co.uk)



# Red Lion Court

Bishops Stortford, Hertfordshire, CM23 3YL

## Overview

- Ground Floor Apartment
- Two Double Bedrooms
- Popular Development
- Family Sized Bathroom
- Large Living Area
- Fully Fitted Kitchen Area
- Parking Included
- Offered Un-furnished
- Town Centre Location
- Walking Distance to Station
- Energy Rating D
- Council Tax Band C



## Description

Conveniently located in the heart of Bishops Stortford's Town Centre within in the popular residential development of Red Lion Court, this well-proportioned, ground floor two-bedroom apartment is offered to the lettings market.

The property comprises of a spacious living area complete with wooden coloured laminate flooring which compromise the décor present throughout the room, adding a light and airy feel throughout the living space which simply cannot be ignored. The room itself has the ample provision of space for both lounge furnishings as well as a dining table and chairs.

This generously sized living space then flows directly on to a fitted kitchen area complete with undercounter appliances inclusive of a washing machine, fridge freezer and oven with hob.

Both bedrooms are double in size, and carpeted throughout and remain naturally lit with large, double-glazed windows in both. This property also benefits from an allocated parking bay whereby the carpark has recently been resurfaced.

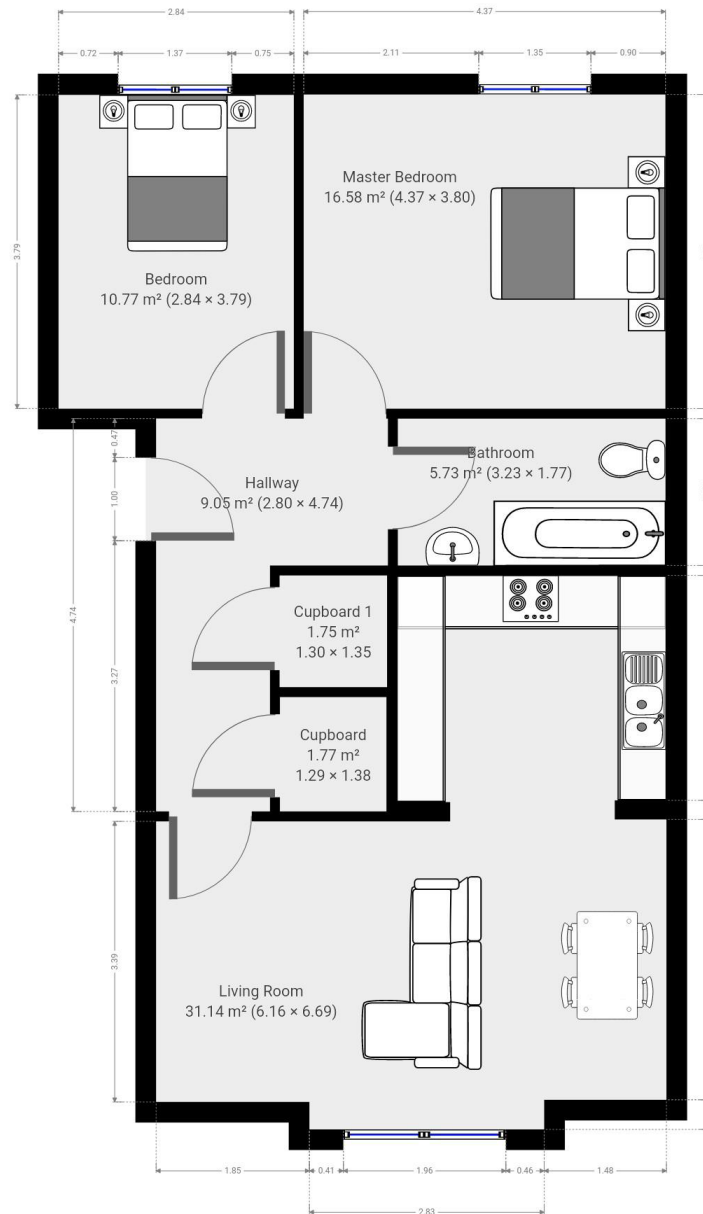
Red Lion Court is ideally situated due to its exceptionally close proximity to the mainline rail station which offers direct services to London Liverpool Street, Stansted Airport and Cambridge City Centre.

The development is also just a stone's throw away from many of the town's amenities inclusive of the Villa restaurant which is on its very doorstep as well as the Empire Cinema Complex, Sainsbury's superstore to name but a few.



Score	Energy rating	Current	Potential
92+	A		
81-91	B		
69-80	C		
55-68	D	63   D	75   C
39-54	E		
21-38	F		
1-20	G		

# Floor Plan



7 Riverside Walk, South Street, Bishop's Stortford, Herts CM23 3AG

Tel: 01279 654646

Email: [info@pm-estates.co.uk](mailto:info@pm-estates.co.uk)

[www.pm-estates.co.uk](http://www.pm-estates.co.uk)

PM Estates wish to advise prospective purchasers that we have not checked the services or appliances. The sales particulars have been prepared as a guide only; any floor-plan or map is for illustrative purposes only. PM Estates, for themselves and for the vendors or lessors of this property whose agents they are give notice that: the particulars have been produced in good faith; do not constitute any part of a contract; no person in the employment of PM Estates has any authority to make or give any representation of warranty in relation to this property.

P820